

SECTION 17, T.6N., R1E., S.L.B. & M.  
IN WEBER COUNTY

SCALE 1" = 400'

TAXING UNIT: 28

SEE PAGE 4

OGDEN VALLEY PARKS SERVICE AREA

UNITED STATES OF AMERICA  
200200001  
320 AC±

UTAH POWER & LIGHT  
200200002  
93.75 AC±

OGDEN CANYON  
WILDWOOD  
ESTATES

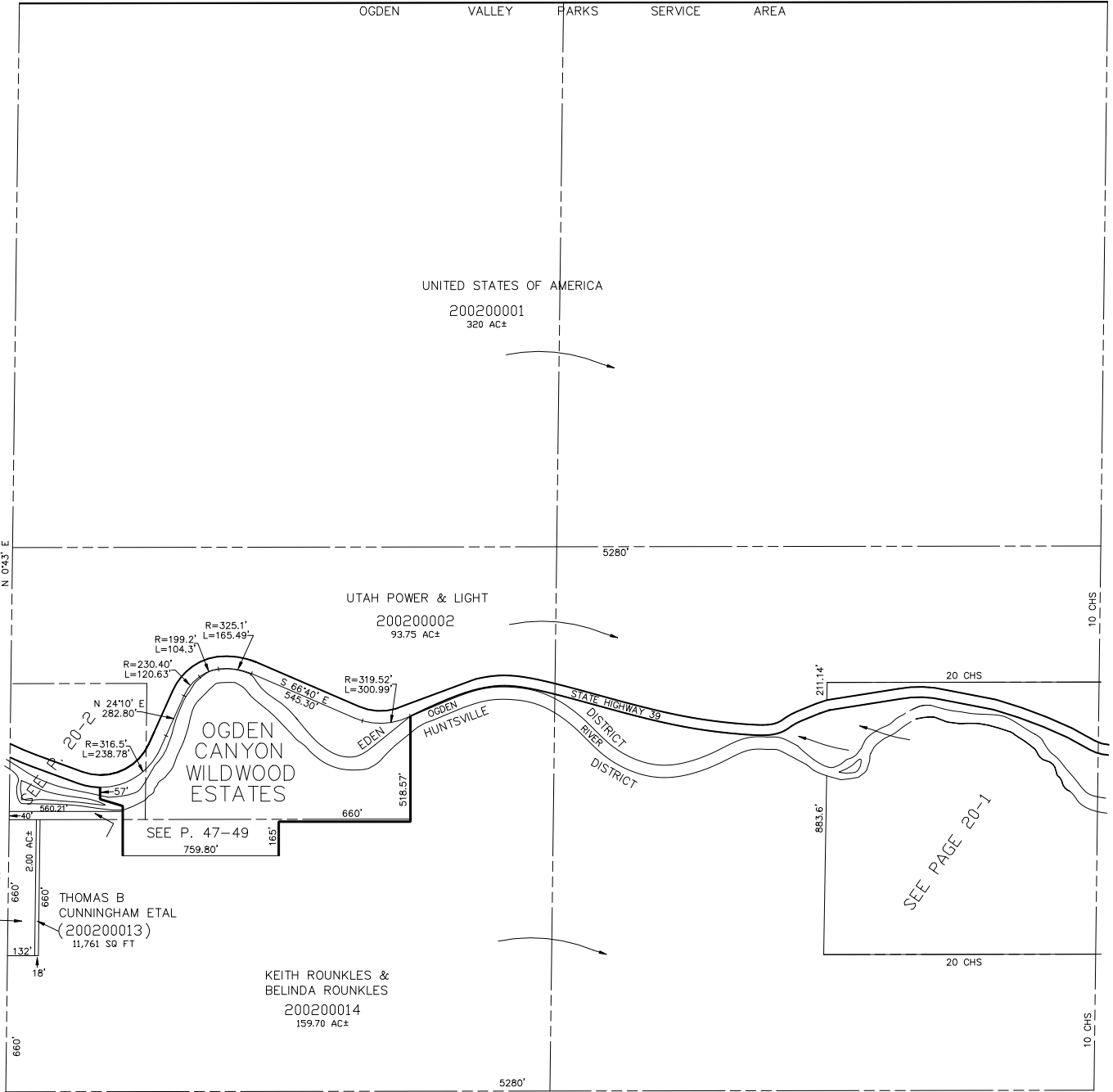
SEE P. 47-49  
759.80'

THOMAS B  
CUNNINGHAM &  
SANDRA F  
CUNNINGHAM  
(200200012)

THOMAS B  
CUNNINGHAM ETAL  
(200200013)  
11,761 SQ FT

KEITH ROUNKLES &  
BELINDA ROUNKLES  
200200014  
159.70 AC±

SEE PAGE 20-1



SEE PAGE 23

SEE PAGE 17

SEE PAGE 34